

Classroom Activity 2 – National Map Exercise

Aim

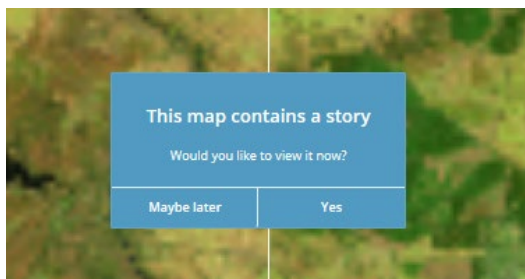
The aim of this activity is to allow students to explore a real-world application of supercomputers and explore the map by adjusting the dates and input data. **National Map** is an online map-based tool to allow easy access to spatial data from Australian government agencies. It was an initiative of the Department of Communications and the Arts (DCA), now currently managed by the Digital Transformation Agency (DTA), and the software has been developed by Data61 working closely with the DCA, Geoscience Australia and other government agencies.

Preparation

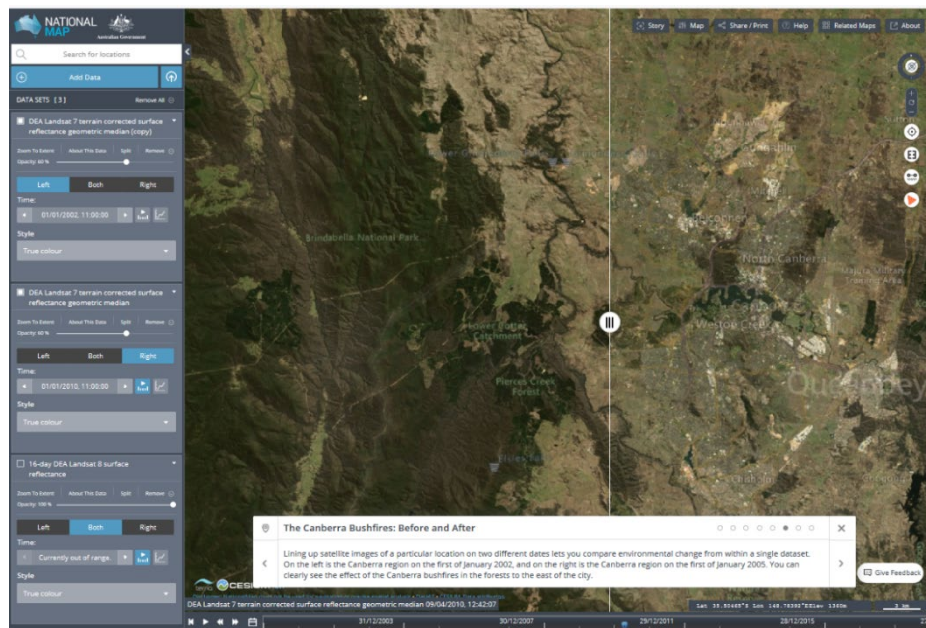
- Students should have access to a computer and the internet
- Students can access the National Map portal here: [National Map](#)
- NCI's example National Map story about bushfires is here: [Bushfires on National Map](#)

Instructions

1. When students visit the Bushfires on National Map example, they should click “yes” on the screen below:



2. This guides students through a series of scenes, showing the Canberra region before and after the 2010 bushfires. Students can move through the story using the arrows at the bottom of the screen:



Students can also explore the site on their own by adjusting the dates and input data on the left-hand side (click on the blue “add data” button), perhaps investigating their hometown, or making their own stories.

As discussed in the video, students can view MODIS data stored at NCI. This screenshot shows a comparison of Vegetation Cover between August 2019 on the left and July 2020 on the right. The extreme dryness of NSW in the lead-up to the 2020 summer bushfires is obvious. Navigate this map yourself here: [MODIS Vegetation Comparison on National Map](#).

