



Education



eT4L Mac OS X

BARE METAL DEPLOYMENT GUIDE

Table Of Contents

- 3. Change control.
- 4. High level overview.
- 5. System Requirements.
- 6. NetBoot process.
- 8. Prepare device for deployment.
- 10. Deployment workflow.
- 13. Deployment complete.

Change Control

Date	Person	Version	Change Details
12-03-15	Calum Hunter	1.0	Initial draft
07-04-15	Calum Hunter	1.1	Update using DEC PowerPoint template
21-04-15	Calum Hunter	1.2	Added System Requirements, fix slide numbers
21-07-16	Calum Hunter	1.3	Added sys reqs re thunderbolt ethernet, updated image versions
28-09-16	Calum Hunter	1.4	Updated for Imagr

High Level Overview

The Mac OS X deployment solution comprises a number of different stages. These stages are detailed in the following slides as screen shots covering the end to end process.

- Main points are summarised as:
- Load the NetBoot environment
- Authenticate against DETNSW.win domain
- Answer basic device environmental questions
- Deploy the configuration to the device



System Requirements

The DOE images for El Capitan (10.11) and Sierra (10.12) are supported only on the following hardware:

- iMac (Late 2009 or newer)
- MacBook (Late 2009 or newer)
- MacBook Pro (Mid 2010 or newer)
- MacBook Air (Late 2010 or newer)
- Mac mini (Mid 2010 or newer)
- Mac Pro (Mid 2010 or newer)

Note: In addition to the hardware requirements above the eT4L image requires a minimum of 4GB RAM and 120GB Hard Disk

See the following link for a list of hardware requirements and feature requirements for macOS 10.12 Sierra

<https://www.apple.com/macos/how-to-upgrade/#hardware-requirements>

System Requirements

For Mac's that do not have built in ethernet, such as MacBook Pro or MacBook Air devices.

You will need to use an Apple Thunderbolt to Ethernet adapter. Other kinds of ethernet adapters do not support NetBoot.

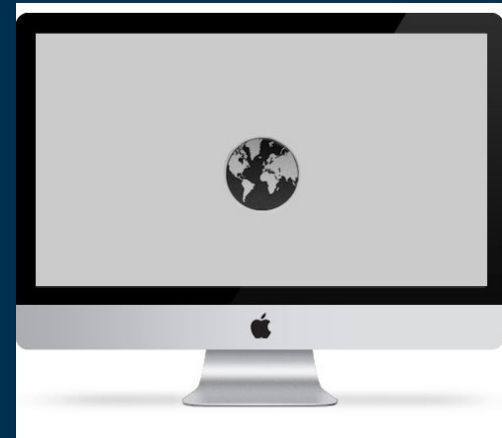
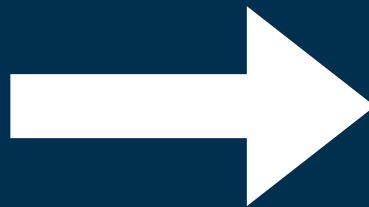


<http://www.apple.com/au/shop/product/MD463ZM/A/thunderbolt-to-gigabit-ethernet-adapter?>

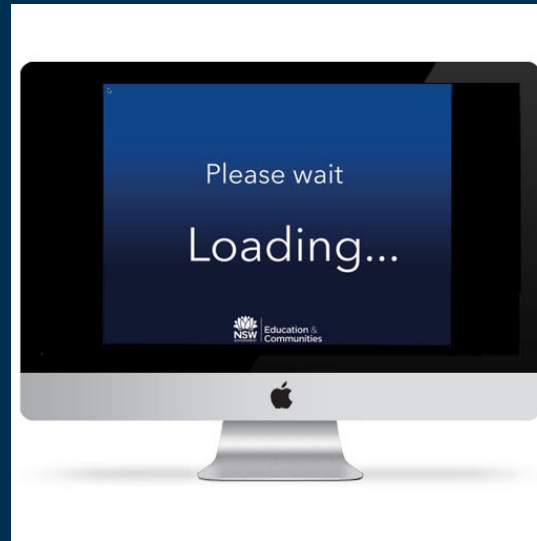
NOTE: NetBooting over Wi-Fi is not supported.

Netboot Process

After connecting the device to power and an ethernet cable to the supported eT4L subnet environment, turn on the device and hold down the N key until a flashing globe icon is displayed as shown below.



The system will load and you will be presented with a dialog box requesting authentication.



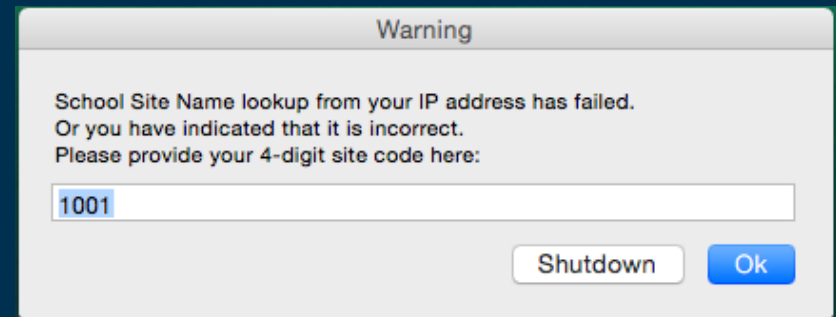
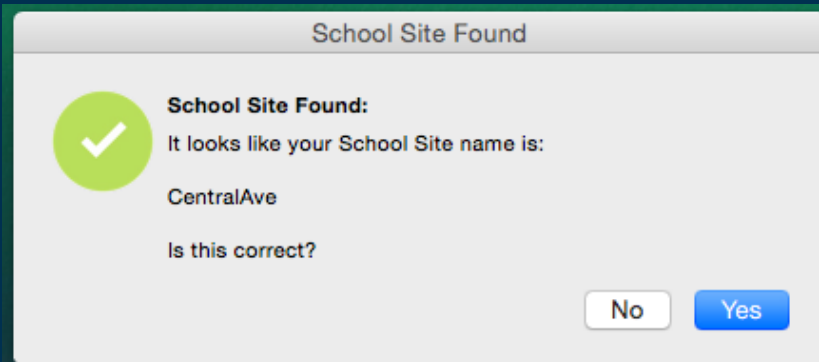
At this point you should enter your login credentials and click login.

The system will check your credentials and group membership.

Prepare Device For Deployment

If your account checks out, the system then attempts to locate its site name from the machines IP address.

You will be prompted to confirm the site name, or if the system was unable to locate the site automatically, you will be prompted to manually enter the site code and try again.



Location Information

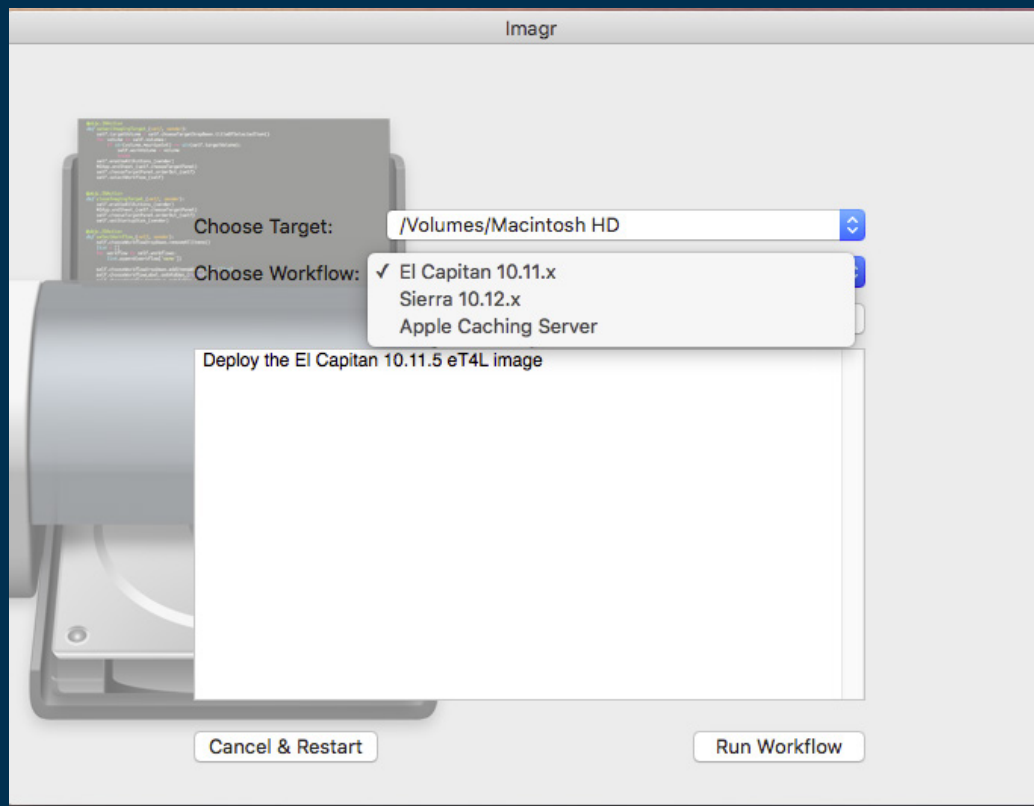
Next you are prompted for information about where the machine is physically located.

Select the correct building, level and room from the popup menus.

The image displays three sequential popup windows for location selection. Each window has a title bar with standard macOS window controls (red, yellow, grey buttons) and a title. The first window, titled 'Building', prompts the user to 'Please select the building this machine is located in from the list below' and features a dropdown menu labeled 'Choose Your Building' with 'B00A' selected and a blue 'OK' button. The second window, titled 'Building Levels', prompts the user to 'Please select the level this machine is located on from the list below:' and features a dropdown menu labeled 'Choose Your Level' with 'L10' selected and a blue 'OK' button. The third window, titled 'Building Rooms', prompts the user to 'Please select the room this machine is located in from the list below:' and features a dropdown menu labeled 'Choose Your Room' with '10WaCT' selected and a blue 'OK' button.

Deployment Workflow

Select the image you wish to deploy from the pop up menu and click on Run Workflow



The device will reboot and configuration settings such as date and time, proxy PAC URL and other items will be applied. During this process the machine may automatically reboot a couple of times. A log is shown for reference.

```
0..20..40..60..80..100

The following items will be installed or upgraded:
+ DEC_Policy_Banner-1.0
  EULA policy banner
+ DEC_LoginWindow_HostInfo.mobileconfig-1.1
  Enable Admin Host Info at Login Window and also enforce username and password text boxes
+ DEC_MS_SCEP_Config-1.1
  Config settings for MS SCEP 2012
+ dockutil-2.0.2
  command line tool for managing dock items
+ DEC_Network_Connector-1.1
  Helps users connect their network resources
+ munkireport-2.2.0
  Installs the Munki Report-php scripts

Run managedsoftwareupdate --installonly to install the downloaded updates.
Finishing...
Done.
Managed Software Update Tool
Copyright 2010-2014 The Munki Project
https://github.com/munki/munki

Starting...
Installing DEC_Policy_Banner-1.0 (1 of 6)...
  Preparing for installation...
  Preparing the disk...
  Preparing DEC_Policy_Banner-1.0...
  Waiting for other installations to complete...
  Configuring the installation...
  97.75 percent complete...
  Finishing the Installation...
  100.0 percent complete...
  The software was successfully installed.
Installing LoginWindow_Settings v1.1 (2 of 6)...
Installing DEC_MS_SCEP_Config_4.5.18.0 (3 of 6)...
  Preparing for installation...
  Preparing the disk...
  Preparing DEC_MS_SCEP_Config_4.5.18.0-1.1...
  Waiting for other installations to complete...
  Configuring the installation...
  40.010631 percent complete...
  Moving items into place...
  Validating packages...
  97.75 percent complete...
  Finishing the Installation...
  100.0 percent complete...
  The software was successfully installed.
```



NSW
GOVERNMENT

Education Deployment Complete

Once you are presented with the user acceptance policy the device is ready to use.

Agreement

Communication Devices & Associated Services Policy

Use of departmental Internet access, online systems and email systems must be consistent with the, Department's Communication Devices & Associated Services Policy and the Department's Code of Conduct.

Departmental communications devices are provided for business use. It is an employee's responsibility to, be lawful, ethical and efficient in the use of these devices. Using the Department's communication, devices to seek out, access or send any material of an offensive, obscene, pornographic, threatening, abusive or defamatory nature may result in disciplinary or legal action.

Personal information must only be accessed, collected and used in accordance with the Privacy and Personal Information Protection Act 1998 and related departmental policies. Copies of the related, departmental policies can be found on the Department's policies and procedures website. Failure to comply with these requirements may result in disciplinary or legal action.

The Department conducts surveillance and monitoring of its computer systems to ensure the ongoing, confidentiality, integrity and availability of business and education systems. Monitoring will be conducted, in accordance with the NSW Workplace Surveillance Act 2005.

Proceeding beyond this point indicates your agreement with these conditions.

Accept

