



Education &  
Communities



# eT4L Mac OS X

BARE METAL DEPLOYMENT GUIDE

# Table Of Contents

- 3. Change control.
- 4. High level overview.
- 5. System Requirements.
- 6. NetBoot process.
- 8. Prepare device for deployment.
- 10. Deployment workflow.
- 13. Deployment complete.

# Change Control

Date	Person	Version	Change Details
12-03-15	Calum Hunter	1.0	Initial draft
07-04-15	Calum Hunter	1.1	Update using DEC PowerPoint template
21-04-15	Calum Hunter	1.2	Added System Requirements, fix slide numbers
21-07-16	Calum Hunter	1.3	Added sys reqs re thunderbolt ethernet, updated image versions

# High Level Overview

The Mac OS X deployment solution comprises a number of different stages. These stages are detailed in the following slides as screen shots covering the end to end process.

- Main points are summarised as:
- Load the NetBoot environment
- Authenticate against DETNSW.win domain
- Answer basic device environmental questions
- Deploy the configuration to the device



# System Requirements

The DEC images for Yosemite (10.10) and El Capitan (10.11) are supported only on the following hardware:

iMac (Early 2008 or later)

MacBook (13-inch Aluminium, Late 2008), (13-inch, Early 2009 or later)

MacBook Pro (13-inch, Mid-2009 or later),

MacBook Pro (15-inch or 17-inch, Mid/Late 2007 or later)

MacBook Air (Late 2008 or later)

Mac mini (Early 2009 or later)

Mac Pro (Early 2008 or later)

**Note: All systems MUST have a minimum of 4GB RAM, 40GB Hard Disk**

# System Requirements

For Mac's that do not have built in ethernet, such as MacBook Pro or MacBook Air devices.

You will need to use an Apple Thunderbolt to Ethernet adapter. Other kinds of ethernet adapters do not support NetBoot.

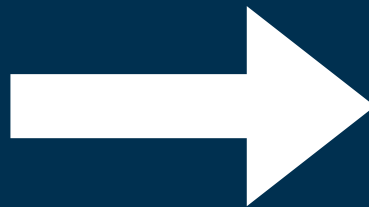


<http://www.apple.com/au/shop/product/MD463ZM/A/thunderbolt-to-gigabit-ethernet-adapter?>

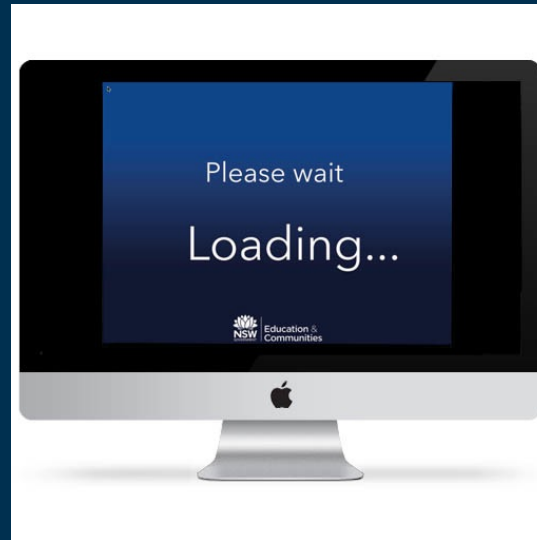
**NOTE:** NetBooting over Wi-Fi is not supported.

# Netboot Process

After connecting the device to power and an ethernet cable to the supported eT4L subnet environment, turn on the device and hold down the N key until a flashing globe icon is displayed as shown below.



The system will load and you will be presented with a dialog box requesting authentication.



At this point you should enter your login credentials and click login.

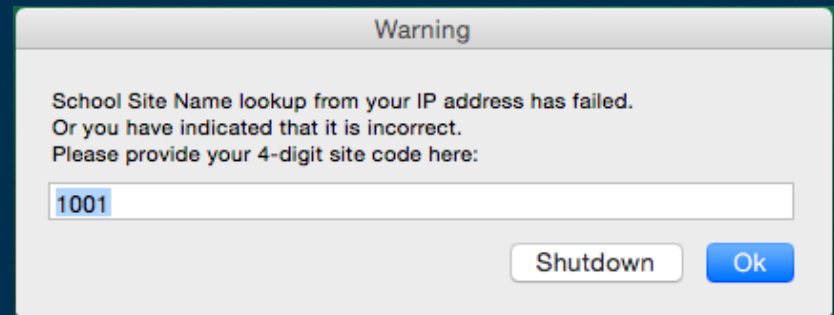
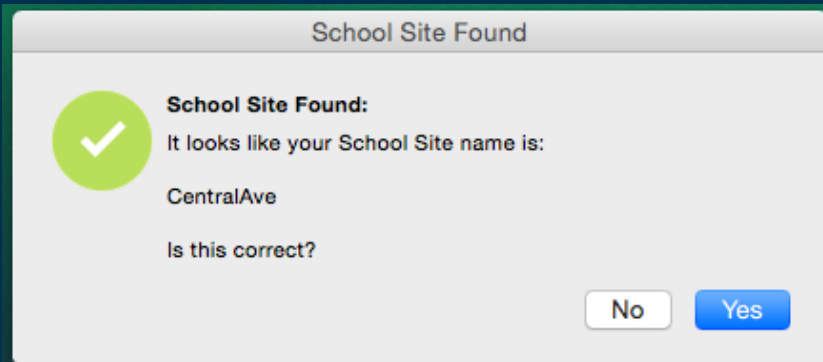
The system will check your credentials and group membership.



# Prepare Device For Deployment

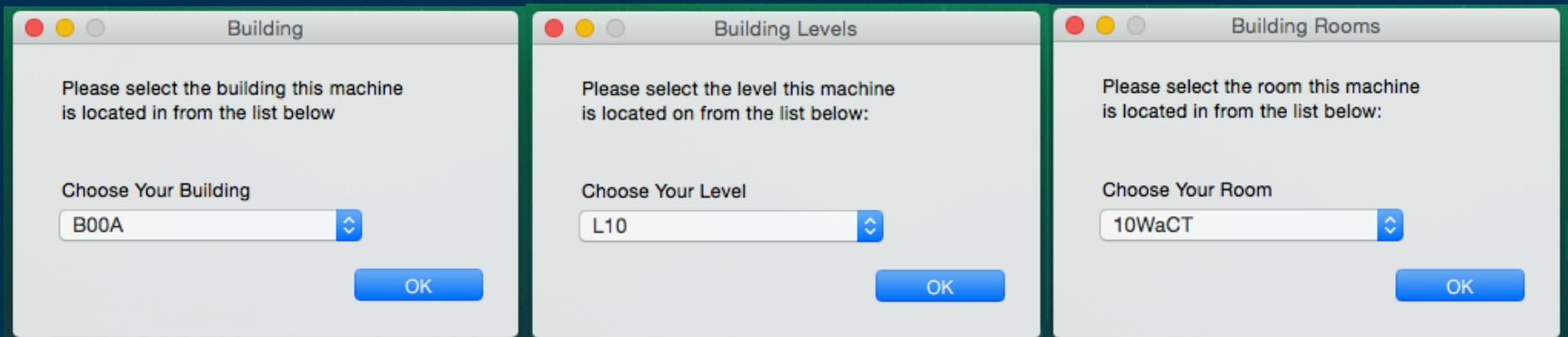
If your account checks out, the system then attempts to locate its site name from the machines IP address.

You will be prompted to confirm the site name, or if the system was unable to locate the site automatically, you will be prompted to manually enter the site code and try again.

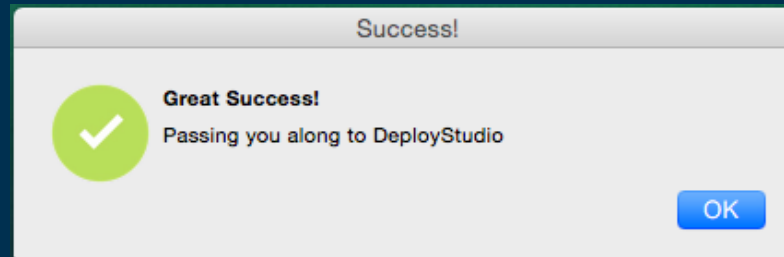


Next you are prompted for information about where the machine is physically located.

Select the correct building, level and room from the popup menus.

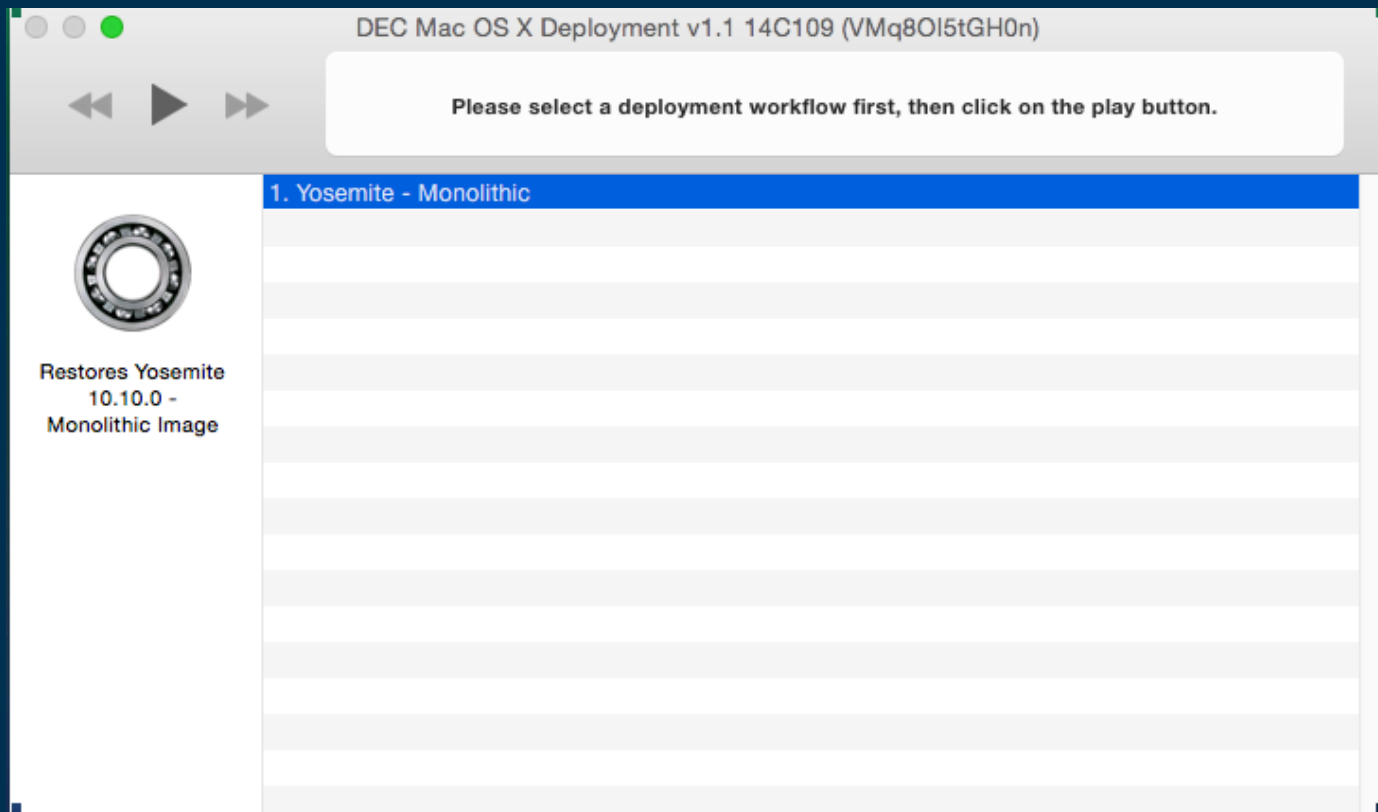


The following dialog lets you know things are proceeding along nicely.

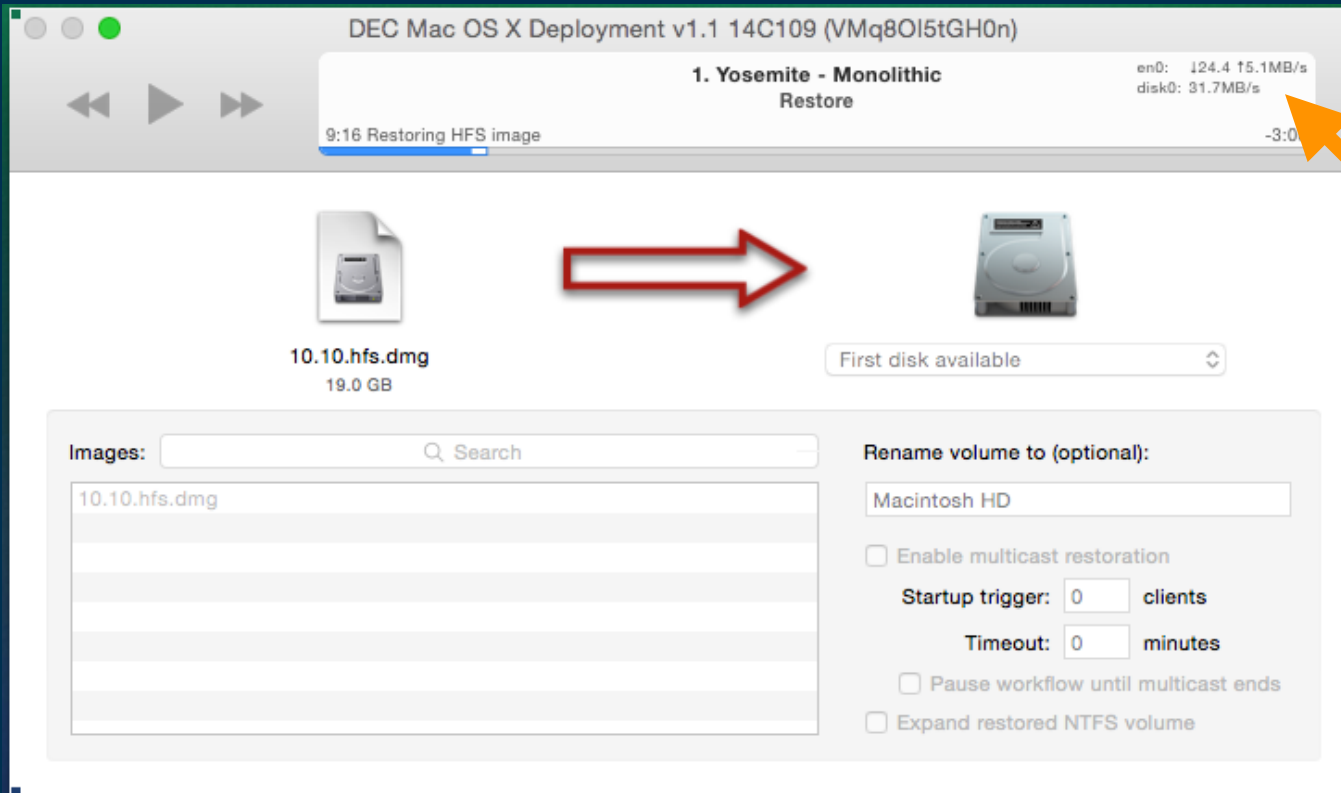


# Deployment Workflow

Select the image you wish to deploy and click the play icon or hit enter to begin.



The deployment task will start restoring the image to the computers hard disk



Note:  
Network and  
Hard Disk  
throughput for reference

The device will reboot and configuration settings such as date and time, proxy PAC URL and other items will be applied. During this process the machine may automatically reboot a couple of times. A log is shown for reference.

```
0..20..40..60..80..100

The following items will be installed or upgraded:
+ DEC_Policy_Banner-1.0
  EULA policy banner
+ DEC_LoginWindow_HostInfo.mobileconfig-1.1
  Enable Admin Host Info at Login Window and also enforce username and password text boxes
+ DEC_MS_SCEP_Config-1.1
  Config settings for MS SCEP 2012
+ dockutil-2.0.2
  command line tool for managing dock items
+ DEC_Network_Connector-1.1
  Helps users connect their network resources
+ munkireport-2.2.0
  Installs the Munki Report-php scripts

Run managedsoftwareupdate --installonly to install the downloaded updates.
Finishing...
Done.
Managed Software Update Tool
Copyright 2010-2014 The Munki Project
https://github.com/munki/munki

Starting...
Installing DEC_Policy_Banner-1.0 (1 of 6)...
  Preparing for installation...
  Preparing the disk...
  Preparing DEC_Policy_Banner-1.0...
  Waiting for other installations to complete...
  Configuring the installation...
  97.75 percent complete...
  Finishing the Installation...
  100.0 percent complete...
  The software was successfully installed.
Installing LoginWindow Settings v1.1 (2 of 6)...
Installing DEC_MS_SCEP_Config_4.5.18.0 (3 of 6)...
  Preparing for installation...
  Preparing the disk...
  Preparing DEC_MS_SCEP_Config_4.5.18.0-1.1...
  Waiting for other installations to complete...
  Configuring the installation...
  40.010631 percent complete...
  Moving items into place...
  Validating packages...
  97.75 percent complete...
  Finishing the Installation...
  100.0 percent complete...
  The software was successfully installed.
```

# Deployment Complete

Once you are presented with the user acceptance policy the device is ready to use.

