

eT4L Configuration Manager 2012

Upgrade for eT4L Primary Schools

The Configuration Manager (CM) component on the eT4L server currently runs the 2007 version and this will be upgraded to CM 2012 to bring it in line with the eT4L servers currently rolling out into High Schools. Together with the server upgrade, all eT4L-managed Windows devices will need their CM Agent updated via a centralised task.

250 primary schools have already had their CM12 upgrades completed successfully and the plan is now to roll the upgrade out to all remaining schools progressively until the end of Term 4 this year. The server component will be deployed in the background with no user intervention required.

The benefits of CM12

Besides a wide range of back-end system management improvements that are generally invisible to the school, the CM12 upgrade will:

- deliver [Windows 8.1 deployment](#) to supported tablets and touch laptops, and join the DETNSW domain to allow for local management via UDM.
- provide access to the new [eT4L Fleet Management Reports](#) which delivers valuable information about your Windows fleet.

Updating the CM12 Agent on Windows PCs

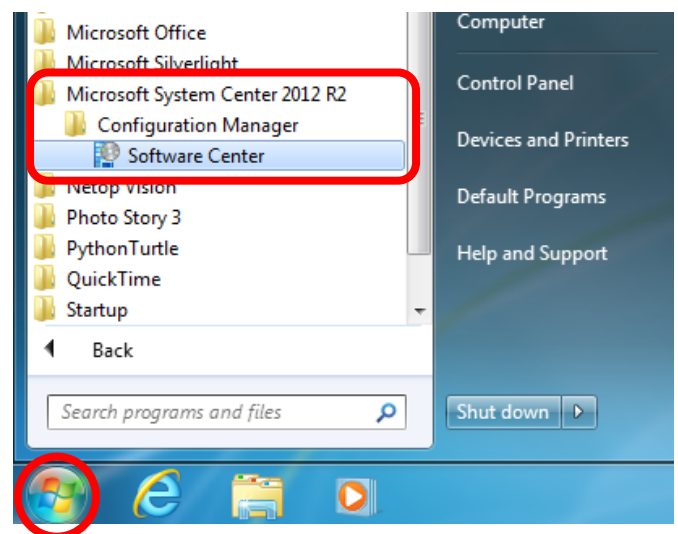
All regularly used Windows PCs that are connected to power and to the school's network via cable will be "woken up" overnight on the school's cutover date and will have the updated CM12 agent deployed. Any managed Windows device that is unable to be remotely woken due to the power point being turned off or the device not being connected to the network, should receive the CM12 update soon after the next time they are powered on while either connected via network cable or wirelessly at school.

To ensure your fleet of mobile Windows devices is also upgraded to CM12, please remind staff with loan laptops to occasionally use their laptops at school. Laptops in trolleys/storerooms will also need to be powered on so CM12 can be deployed.

An update to all eT4L servers in primary schools, SSPs and EECs will commence rolling out from mid-November.

How will I know if CM12 is installed on a PC?

The easiest way to check if CM12 has been deployed to a PC or not is by opening the *Windows menu*, selecting *All Programs* and checking the list to ensure the **Microsoft System Center 2012 R2** folder is displayed.



What to do if CM12 doesn't appear on a PC

Once you have identified that CM12 has been deployed to PCs at the school, it is likely that a **small number of your managed Windows computers will fail to automatically receive the CM12 upgrade**. These will need manual intervention to rectify the issue and ensure they are managed effectively in an eT4L environment. The simplest and best way to remediate these PCs is to [F12 build them](#) again **early next year**. It's important to ensure that any important files are backed up prior to starting the F12 process.

Further advice will be provided at the start of Term 1, 2016.