



This publication assists applicants for Year 5 entry to opportunity classes to become more familiar with the Opportunity Class Placement Test.

Some of the items have not been included for copyright reasons. Items that assess reading will be available at a later date.

In the actual Opportunity Class Placement Test there are 20 questions in reading, 20 in mathematics and, until 2005, 20 in general ability. From 2006 there are 30 general ability questions.

The Opportunity Class Placement Test measures ability and is set to discriminate at a very high level. Students who are accustomed to answering most questions in tests correctly should not be discouraged if they get a number of questions wrong. It is very rare for even the highest scoring candidates to score full marks on all components of the Opportunity Class Placement Test..

Opportunity class entry does not depend entirely on a student's performance in the Opportunity Class Placement Test as school assessment scores in English and mathematics are provided by the primary schools. It is important to note that selection committees and appeals panels will not accept students' performance in this past paper as evidence of academic merit for the purposes of entry into an opportunity class in any future year.

OC PLACEMENT TEST

2001

PART 2

INSTRUCTIONS

- You will have 30 minutes to complete Part 2 of the test. It contains 30 questions.
- With each question there are four possible answers **A, B, C** or **D**.
- Mark the **one** answer you think is best for each question on the separate answer sheet.
- If you decide to change your answer rub out your first mark completely then fill another oval to show your new answer.
- Do not spend too long on any question. If a question is too hard, go on to the next question and come back later if you have time.
- You may do your working out on the test booklet, but remember to mark your answer on the answer sheet.

This message is in the test. When you see it follow the steps.



ANSWERS CHECK (Example)

Look on your Answer Sheet — the last question you answered should have been Question 15 –

If it was, keep going.

If it wasn't, put your hand up for help.

PLEASE DO NOT TURN THIS PAGE UNTIL YOU ARE TOLD.

START OF PART 2

1 The word PERMANENT is most nearly the **opposite** of

- A CONDIMENT
- B TEMPORARY
- C HAIRCUT
- D DIFFICULT

2 SWITCH is to ELECTRICITY as TAP is to

- A SHOCK
- B HIT
- C WATER
- D OPEN

3 Vinh buys a notepad for \$4.95 and a pen for \$2.60. He pays with a \$10 note.

How much change should he get?

- A \$2.45
- B \$2.55
- C \$3.45
- D \$3.55

4 The word BROCHURE means most nearly the **same** as

- A NEWSPAPER
- B PAMPHLET
- C FOREIGNER
- D INFORMATION

5 The numbers in each of the four patterns follow the same rule.

Find the missing number.

8	21	13
---	----	----

5	12	7
---	----	---

6	15	9
---	----	---

7	11	?
---	----	---

- A 4
- B 6
- C 7
- D 8

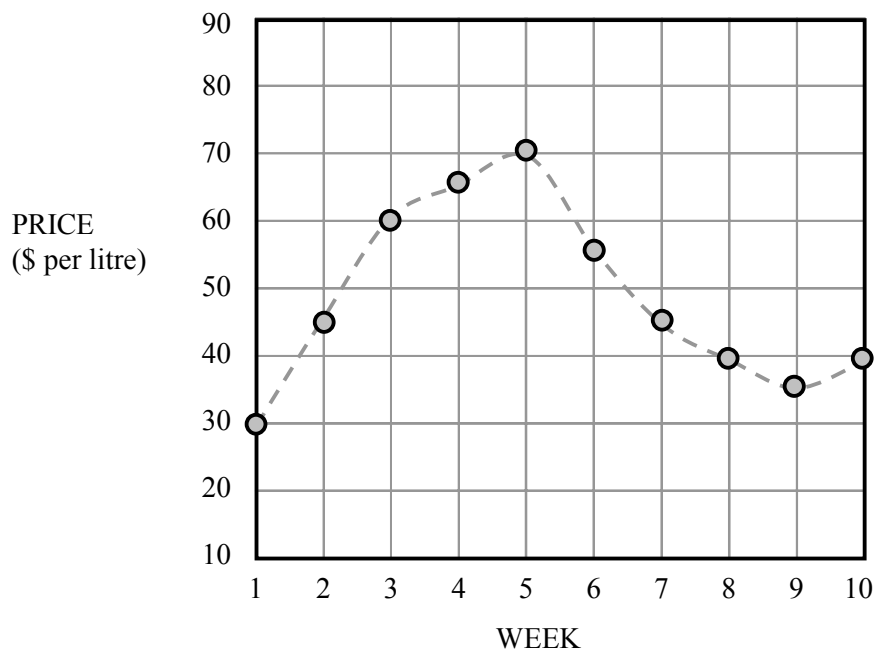
6 In a certain code **LCRWPCJ** means **NATURAL**.

In the same code **NQQUGDJG** means

- A POWERFUL
- B POSSIBLE
- C PROMISES
- D PLAYBOOK

Read the information below and answer questions 7 and 8

Beta oil is used to make expensive perfume. The price of the oil changes greatly, as shown on this graph over a ten-week period.



7 Compared to the price in Week 5, Beta oil cost half as much in

- A Week 1.
- B Week 7.
- C Week 8.
- D Week 9.

8 In Week 8, how much Beta oil could have been bought with \$100?

- A 2.5 litres
- B 8 litres
- C 40 litres
- D 400 litres

- 12 If the words below were rearranged to form a sentence, which word would come last?
- into for the the the he put cake bowl ingredients mixing
- A ingredients
 B mixing
 C bowl
 D put

- 13 Which letters are missing in the series?

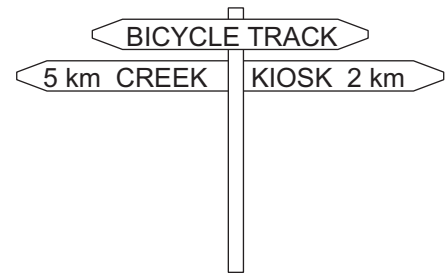
ZAC XBF ? TDL REO

- A VCI
 B UTL
 C VCL
 D UTI

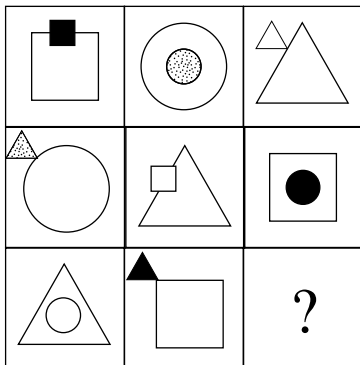
- 14 Ron starts at the signpost. He rides to the creek, then turns around and rides to the kiosk.

How far does he ride altogether?

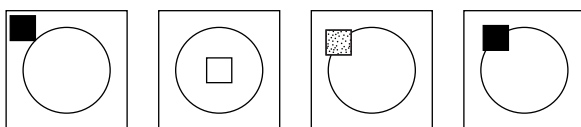
- A 7 km
 B 10 km
 C 12 km
 D 14 km



- 15



Which answer figure should replace the question mark?



- A B C D

- 16** A fish tank full of water weighs 30 kg. The same tank weighs 17 kg when it is half full.

How much does the empty tank weigh?

- A** 4 kg
- B** 9 kg
- C** 13 kg
- D** 15 kg

- 17** In a school of 203 individuals there are 41 more girls than boys.

How many boys are there?

- A** 68
- B** 81
- C** 162
- D** 181

- 18** Marie bought one kilogram of oranges. There were seven oranges.

How much does one orange weigh?

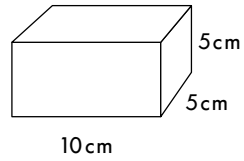
- A** about 15 grams
- B** about 95 grams
- C** about 140 grams
- D** about 990 grams

- 19** Which number goes in the to make the number sentence true?

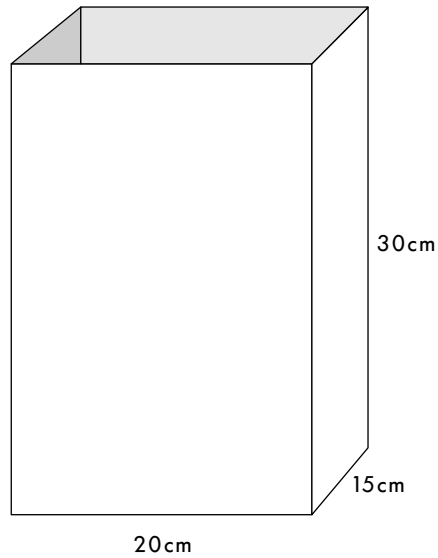
$$30 \times 20 = 40 \times \text{$$

- A** 10
- B** 15
- C** 50
- D** 60

20 Boxes like this



are to be packed in this carton.



What is the greatest number of boxes that will fit in the carton?

- A 18 boxes
- B 24 boxes
- C 36 boxes
- D 65 boxes



ANSWERS CHECK No. 5

Look on your Answer Sheet — the last question you answered should have been Question 20 –
If it was, keep going.
If it wasn't, put your hand up for help.

GO STRAIGHT ON

27 Which word does not belong with the other three?

- A WALK
- B STROLL
- C SHUFFLE
- D RIDE

28 Lex's birthday is exactly five weeks earlier than Sam's birthday. Sam was born on 15 November.

NOVEMBER 2001						
MON	TUES	WED	THURS	FRI	SAT	SUN
			1	2	3	4
5	6	7	8	9	10	11
12	13	14	15	16	17	18
19	20	21	22	23	24	25
26	27	28	29	30		

What is the date of Lex's birthday?

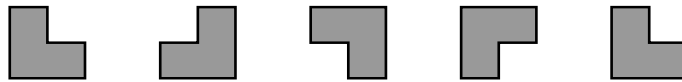
- A 10 October
- B 11 October
- C 12 October
- D 25 October

29 Which letters are missing in this series?

CEH EGJ ? IKN KMP MOR

- A GJL
- B HIL
- C GIL
- D HJL

30 What is the rule for the next shape in this pattern?



- A Turn the shape a quarter turn clockwise.
- B Turn the shape a half turn clockwise.
- C Turn the shape a half turn anticlockwise.
- D Turn the shape a quarter turn anticlockwise.



ANSWERS CHECK No. 6

Look on your Answer Sheet — the last question you answered should have been Question 30 –
If it wasn't, put your hand up for help.

END OF PART 2
LOOK BACK OVER YOUR WORK IN PART 2
DO NOT TURN BACK TO PART 1

ACKNOWLEDGMENTS

Madeline Kempster, Margaret Backhouse and Ella Turnbull, *More Verse by Young Australians*. Adelaide: Rigby, 1970.
F. W. Allsop, O. W. Hunt and J. Blogg, *English Today, Book One*, John Wiley and Sons Australasia Pty Ltd, 1974.
Alan Marshall, 'Tell Us about the Turkey, Jo...' in Hume Dow and John Barnes, *World Unknown: An Anthology of Australian Prose*, Oxford University Press, London, 1963.