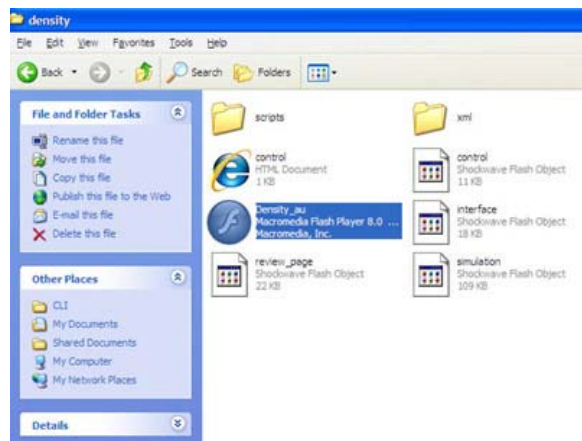


## Using the Density simulation



Download and unzip the object

To launch the object click on the highlighted icon called *Density.au*.



Read the first screen carefully.

When you are ready to continue click the *Proceed* button below the instructions.



Click the blue *Planning* ball at the top of the screen.

## Density simulation user guide



Read the text at the top of the page.

Use the questions to help clarify your investigation.

Click the check box next to each question that you think is important. A cross will appear and you will be able to access this information later.

When you are ready to continue click **Proceed**.



Move in a clockwise direction and click the next planning item – **Materials and measurement**.

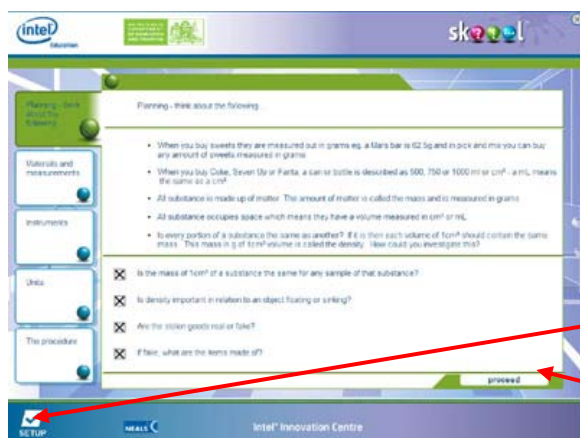
Repeat the process for all 5 planning stages.

Your answers will be available to you later if required.



When you have completed all 5 planning stages and all decisions are made click the **Next** button in the red box.

## Density simulation user guide



You can review the answers you recorded in the planning stage using the navigation tabs on the left of the screen. The current tab is in green. You can make changes if required.

When you are completing the simulation section you will be able to see these answers again by clicking the **setup** button at the bottom left hand side of the screen.

When you are ready to continue click the **proceed** button in the bottom left of the screen to complete the simulation section of this exercise.

N.B. Do not assume the answers shown in the screen shot are right or wrong.



Read the instructions carefully. Click the **tables** button.



Print out a copy of each table to record your data.

When you have finished printing click the black close button in the bottom right hand corner of the screen.

## Density simulation user guide



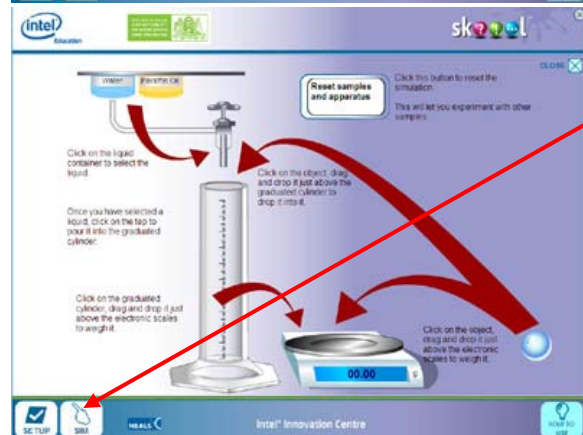
When you are ready to continue click **proceed** to move to the simulation exercise.

The toolbar at the bottom of the screen has now been activated and can be used to navigate between the different sections of the learning object.



This is the main screen of the simulation section where you will investigate the properties of the various objects.

There is a **How to use** section that will take you to the following screen.



Read the instructions and click **Sim** when you are ready to complete the exercise.

You can navigate between the simulation 'sim', the help section 'How to use' and the answers you recorded in the planning stage 'Setup' by using the buttons in the navigation bar at the bottom of the screen.



Complete the simulation as instructed.